

ArgoLink® User's Manual

In this Manual you will learn:

- The communication utility in ArgoBuiler
- How to send files from ArgoLink to the target device
- How to received files from the target device to ArgoLink

DOC. NO. UM-PT105-03

Oct. 2006

Version 1.0

Index

1. INTRODUCTION	1
2. COMMUNICATION PARAMETERS	2
3. REMOTE MODE	4
4. PROJECT MODE	6
5. MENU FUNCTION.....	7
5.1 THE FILE MENU	7
5.2 THE VIEW MENU.....	7
5.3 THE SETUP MENU	7
5.4 THE TOOL MENU.....	8
5.5 THE HELP MENU	9
6. TOOL BAR.....	9
7. QUESTION AND ANSWER.....	10
7.1 HOW TO INSTALL USB DRIVER	10
7.2 HOW TO UPLOAD THE PROGRAM TO PT-10	13
7.3 HOW TO CHECK PT-10/12 FIRMWARE	17
7.4 HOW TO UPDATE PT-10 WITH NEW FIRMWARE.....	17
7.5 HOW TO CHECK CRADLE (CRD-10) FIRMWARE VERSION?.....	20
7.6. HOW TO UPGRADE CRADLE (CRD-10) FIRMWARE?	21

1. Introduction

The Purpose of ArgoLink is to download and upload the data from Portable Data Collector (PDC). The files must be created by ArgoBuilder and the extended file names ended in .abp, .cft (font file), .dat (index file).

Besides transferring data, ArgoLink features:

- Format the Hard Disk in PDC
- Update the firmware
- Download the self-developing program.

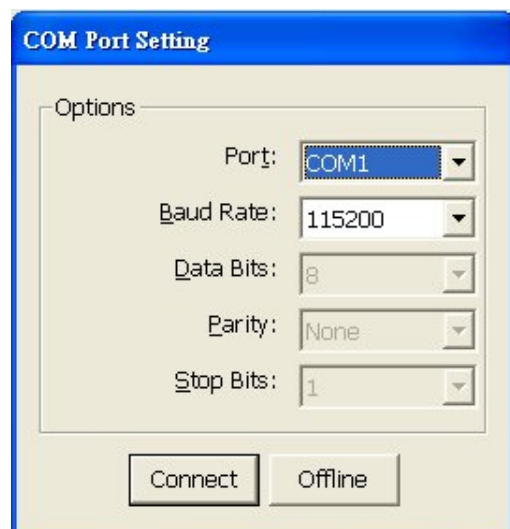
Activate ArgoLink from ArgoBuilder by clicking on the ArgoLink icon on the toolbar, or selecting it from menu tools> ArgoLink.

To activate ArgoLink from Windows, select ArgoLink from start > programs > ArgoLink

2. Communication Parameters

In order to transfer files between a Host PC and a PDC :

1. Connect the PDC's RS-232 port to the PC's serial communication port, power on the PDC.
2. Start the ArgoLink application program.
3. Set ArgoLink communication parameter. Select setting under the Setup menu. The Com-Port setting dialog box will appear.



Set the parameters as follows :

Port : Select the com-port connected to the PDC. Click Port to set the com-port properties.

Baud Rate : 115200

The default of ArgoLink is 115200.

Note : In order to carry out a successful communication session, the communication parameters of the PDC and the Host PC must match each other.

Data Bits : 8

Parity : None

Stop Bits : 1

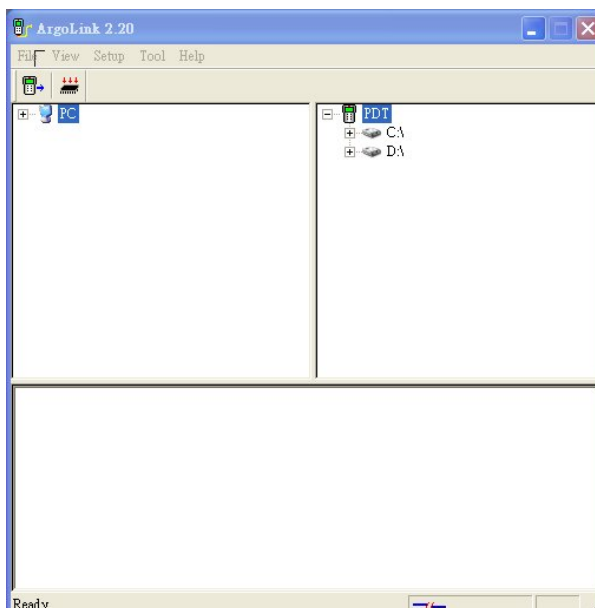
The important issue in these settings is that they must be identical to the setting in the PDC. Otherwise, the host PC and PDC will not be able to understand each other and communication will fail.

4. At this stage, ArgoLink will have established communication with your PDC and will display the PDC's file directory in a tree-like fashion.

ArgoLink provide two modes, Project Mode and Remote Mode, for downloading files. Please refer to following chapters for more detailed.

3. Remote Mode

The operation of Remote Mode is the same as common computer file operating. The user needs only to point and click (keeping the button depressed) on the file to be copied, drag the file to its destination, and then drop it by releasing the mouse button.



Remote Mode always displays a PC window on the left side, which shows all drives and folders in the host PC. On the right side is a comparable window for the PDC.

When this mode used, file must be put into correct directory. Otherwise, the program will not be able to work successfully.

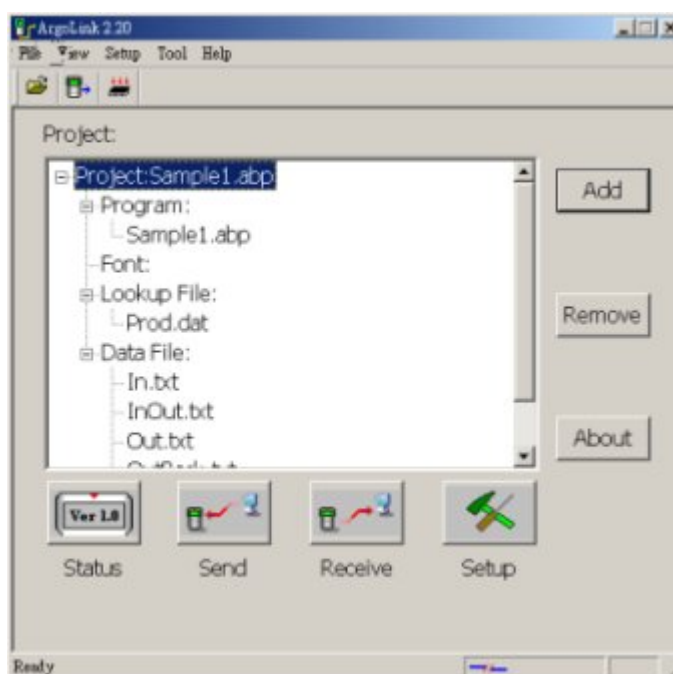
Note: Below are the file usages of ArgoBuiler:

Item	Ext. file name	Stored directory	Description
Program	ABP	D:\Program	Main program in Project
Lookup file	DAT	D:\Lookup	When user collects and confirms the collected data to collector, the system will search the specified lookup file for any matched string, and replace it with the data shown on the display.
Fonts	SFT CFT	D:\Fonts	SFT is the system font and CFT is downloaded font.
Data	DAT	C:\Data	The stored area of collected data in program

4. Project Mode

Transferring files between the PC and PDC now becomes simple. When project mode is chosen, all the data files bounded with ArgoBuilder will be downloaded automatically. Project Mode can reduce the chance of wrong directory happen. In addition, user can check Lookup file and data file quickly. They can modify wrong link in ArgoBuilder if wrong directory happen.

Note: Project Mode can transfer 10 programs (or application) in one time. If more than 10 programs need to be transfer, then you need to do twice.



1. **Add:** Search project record file (.ini) produced by Argobuilder to load into PDC
2. **Remove:** Remove a loading project
3. **About:** Provides information about ArgoLink application program – such as software version number
4. **Status:** Verify PDC firmware version and hard Disk status
5. **Send:** the process of transmitting files **from** the **Host PC** to PDC.
6. **Receive:** Transmitting files **from PDC** to a **Host PC**. <Carriage-Return> and <Line-Feed> characters can be added, or delete the files in PDC after completing loading.
7. **Setup:** COM Port Setting

5. Menu Function



5.1 The File Menu

Add: (Project Mode Only): add project produced by ArgoBuilder to load into PDC

Receive: Transmitting files from PDC to a Host PC

Exit: End ArgoLink

5.2 The View Menu

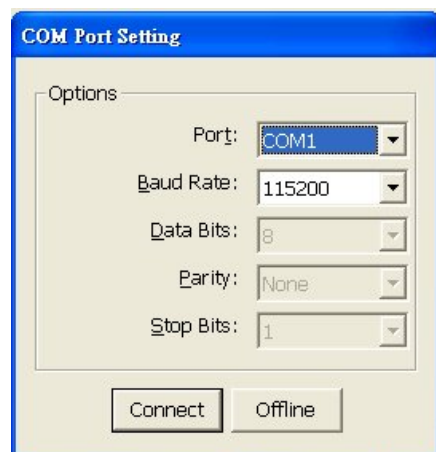
Project Mode: Switch to Project mode

Remote Mode: Switch to Remote mode

5.3 The Setup Menu

Select Connect Port: Choose Serial port (Com port) or USB

Setting: Set protocol of Com port or USB port



Receive Setup:

Add <Carriage-Return>: Add character <0x0D> while collecting data

Add <Line-Feed>: Add character <0x0A> while collecting data

Delete File: Delete the collected data after collecting

Daemon setting:

Daemon Start: Open daemon function. ArgoLink will transmit data automatically according to user defined time and specified file.

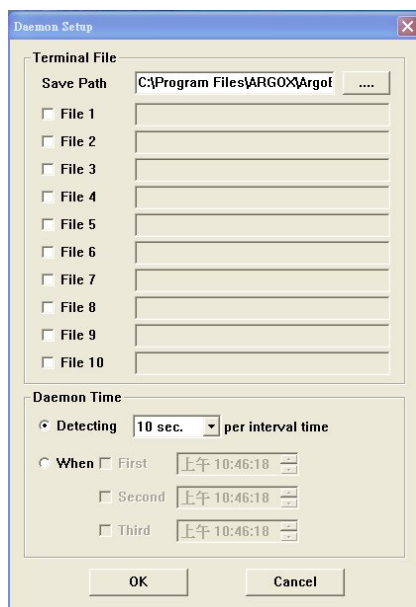
Note: PT-10/12 must be connected to Host PC.

Setting: Setup the file receiving parameters of Daemon.

Save Path: specify saving location in Host PC

File 1 ~ File 10: specify complete path on the PT-10/12 including the drive, directory and file name

Daemon Time: files auto receive time can be set in fixed interval or certain time.



5.4 The Tool Menu

Format C: Format PT-10/12 Hard Disk C of PDC

Format D: Format PT-10/12 Hard Disk D of PDC

F/W Update: Update the PDC firmware

Cradle F/W Update: Update the cradle firmware.

Defrag Disk D: This option will defragment files on Disk D of PDC

Language Support: Download the menu other language resource to change PDC system menu

5.5 The Help Menu

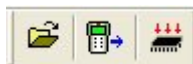
Help Topic: Display help content.

About: The About command provides information about the ArgoLink application program – such as software version number

Cradle F/W Version: this command provides information about Firmware revision of cradle

6. Tool Bar

1. Project Mode Toolbar



Create a new project to download



Receive a data file from terminal



Firmware update

2. Remote Mode Toolbar



Receive a data file from terminal



Firmware update

7. Question and Answer

7.1 How to install USB driver

1. Generally, the drivers for USB devices are found automatically; however, in Win98 , WinME, you might need to re-install the drivers. If Windows does not automatically detect the devices, use the "Add New Hardware" feature in the control panel to find the USB devices.



2. Choose first option → Next



3. Put OS CD and choose CD-ROM driver → Next



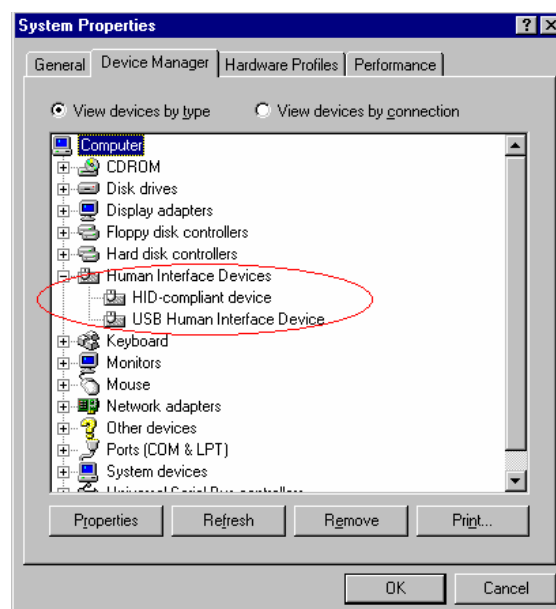
4. Next



5. Finish

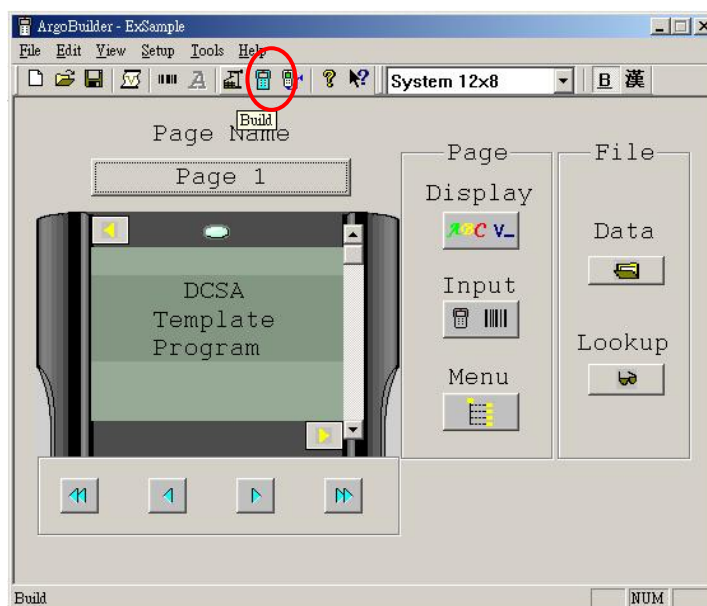


6. You can see "USB Human Interface Device" in System Properties.

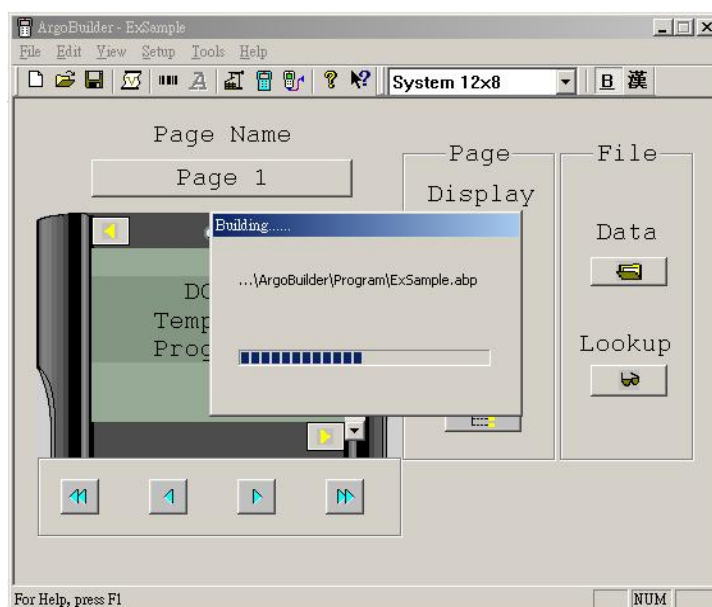


7.2 How to upload the program to PT-10

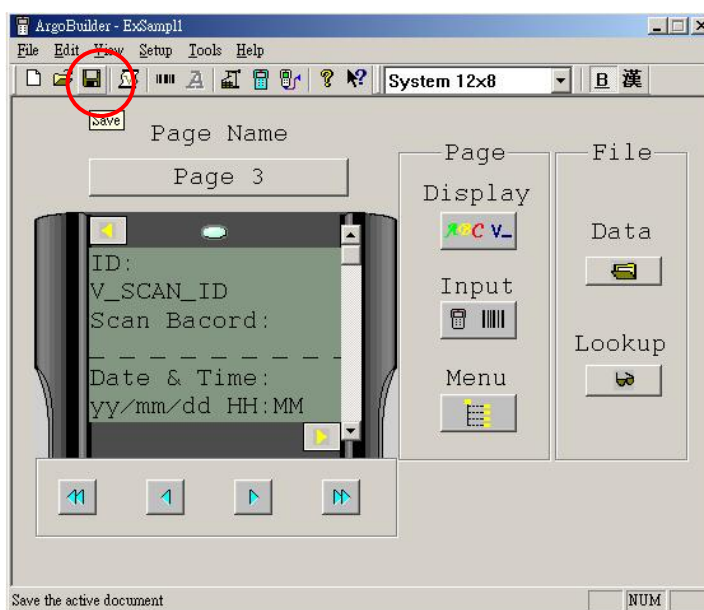
1. Build the modified program in ArgoBuilder



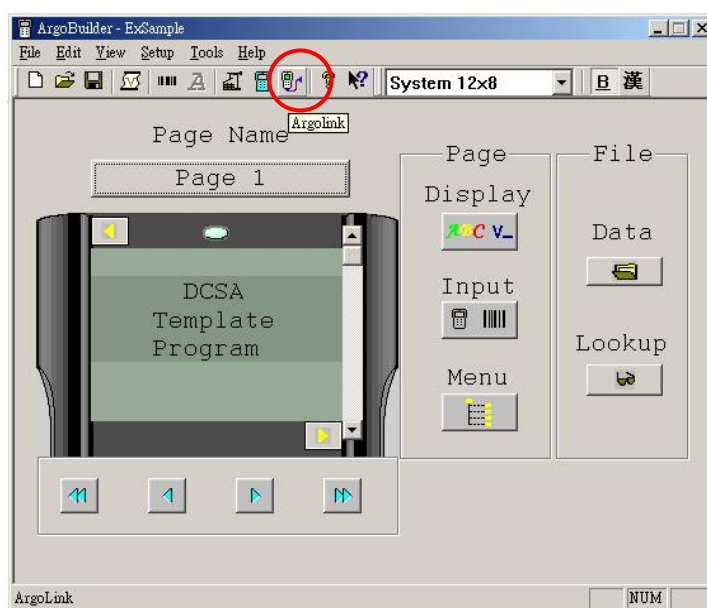
2. ArgoBuilder will start compiling the program and create a new abp file.



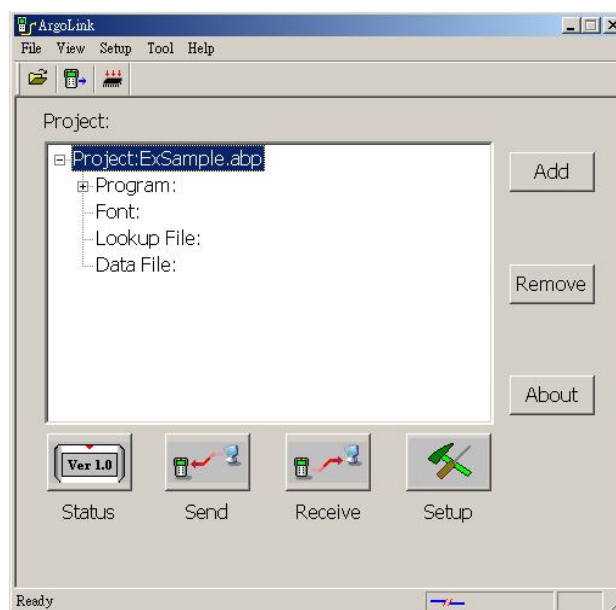
3. Save and overwrite the file (or save as another file).



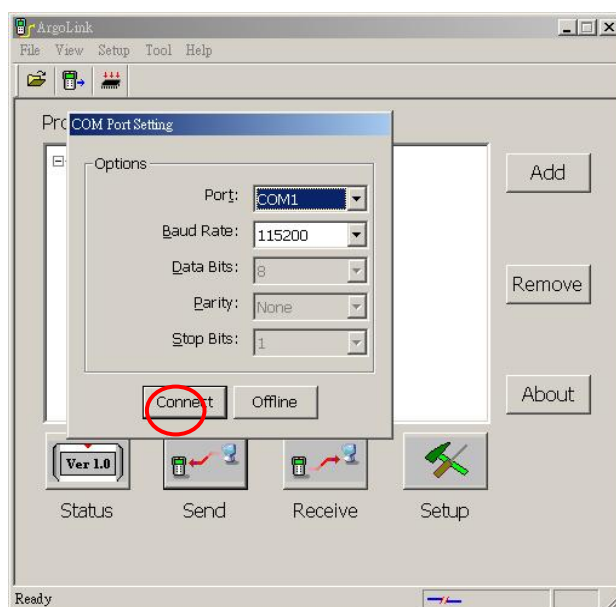
4. Run ArgoLink



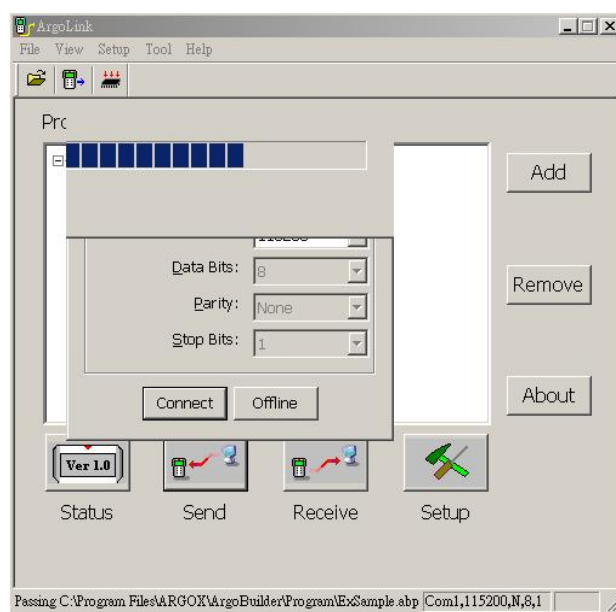
5. ArgoLink dialog box appears and please click “Send” to load the program.



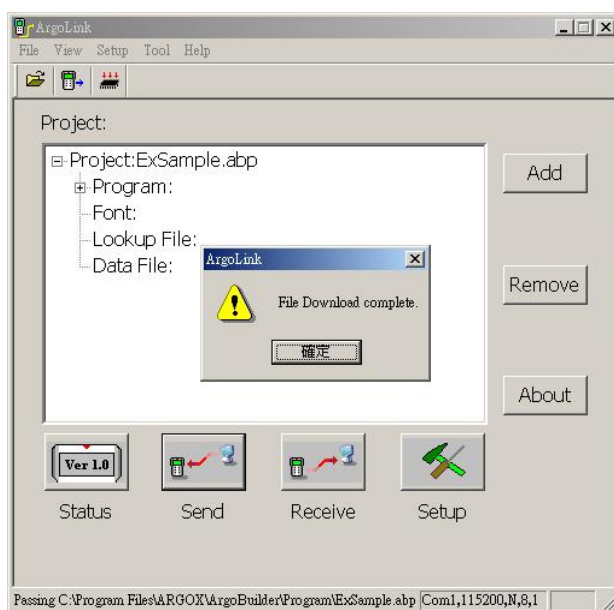
6. Set com port and connect to PC.



7. File sending



8. Program loading completed.

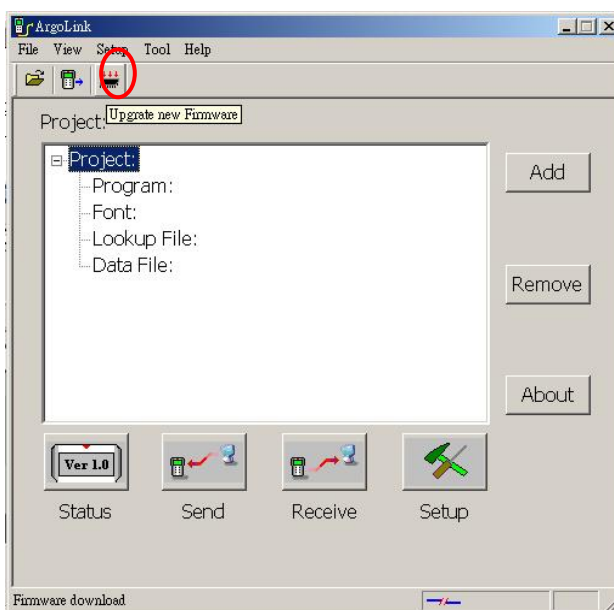


7.3 How to check PT-10/12 firmware

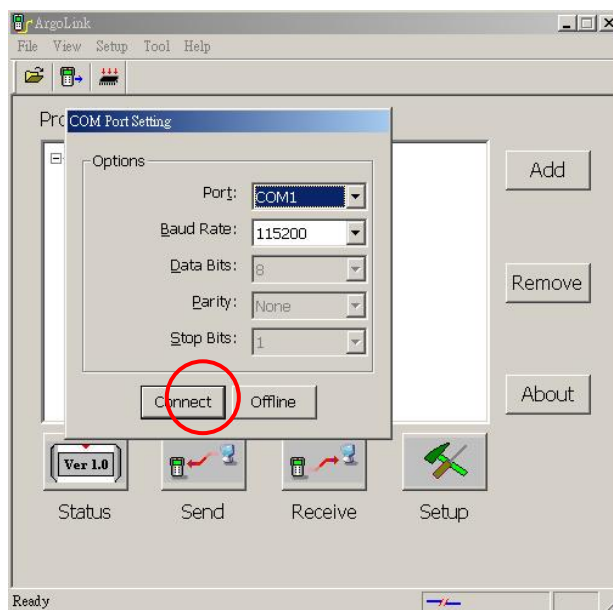
Please press "FN" + "9" keys, then you can get firmware version.

7.4 How to update PT-10 with new firmware

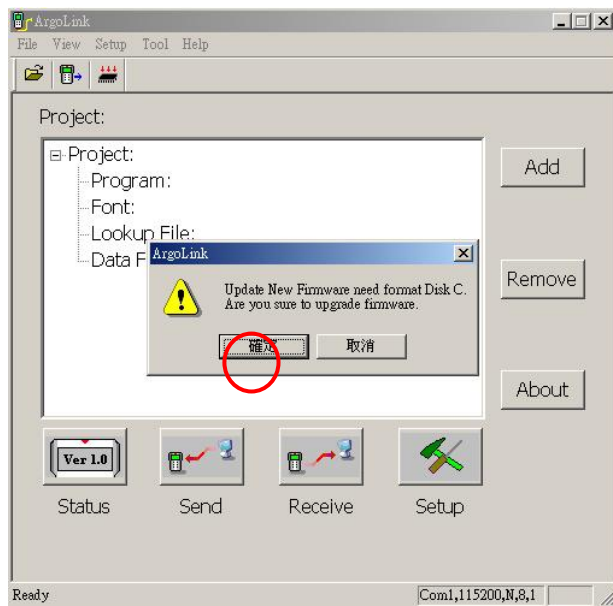
1. Link RS232 cable between PT-10 and PC.
2. Power on PT-10 and run ArgoLink software
3. Set PT-10 to Upgrade Mode
 - 4. Setting
 - Enter "0000" as password
 - 4. F/W Upgrade
4. Click "Upgrade New Firmware" button



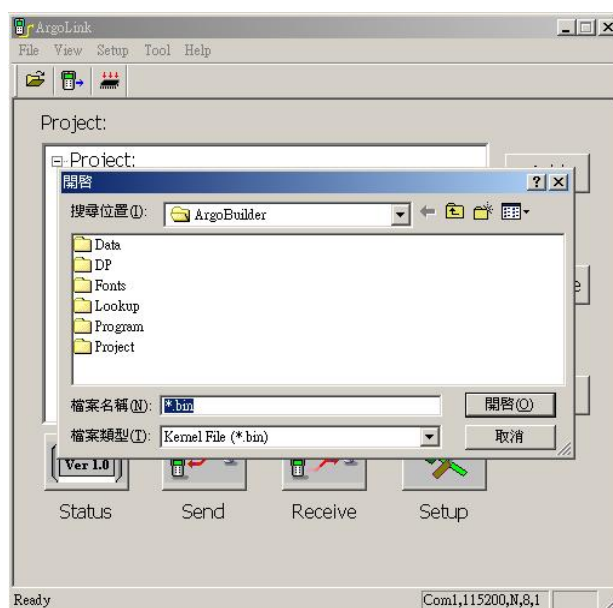
- Set Com port and click “Connect” button



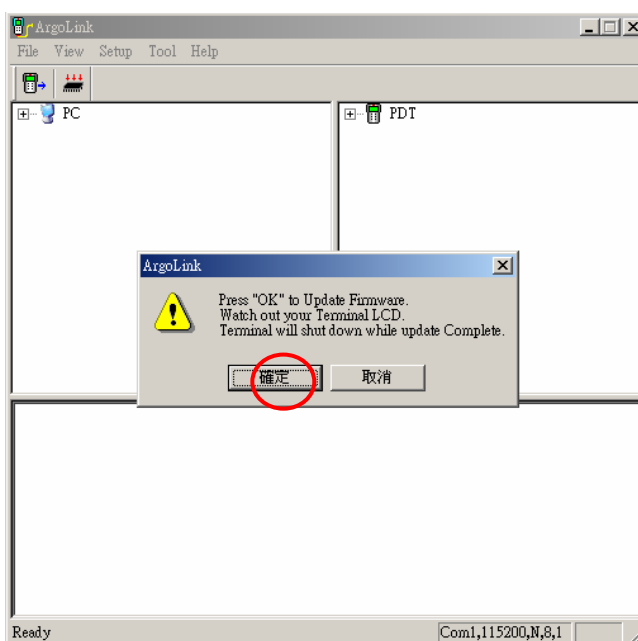
- Click “OK” to confirm upgrade procedure



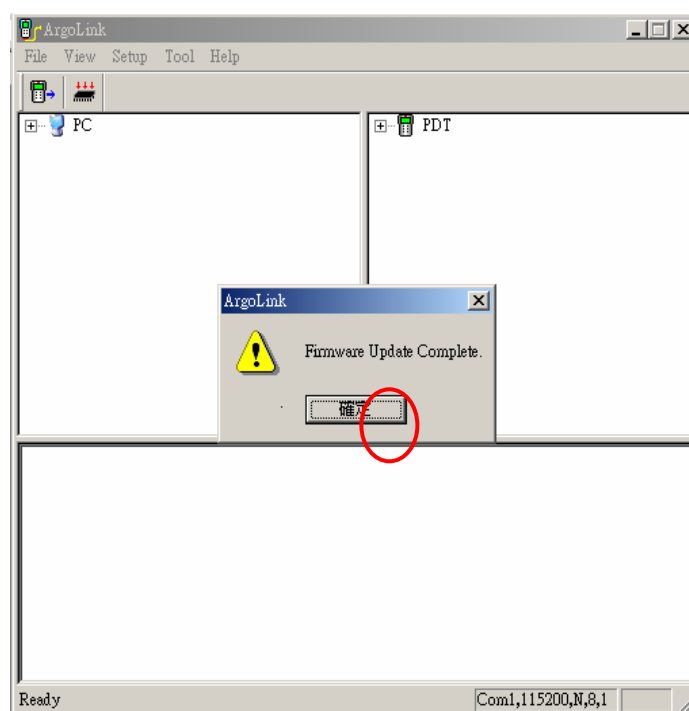
7. Select firmware file in your PC and click "Start" button. The upgrade firmware will start to proceed.



8. Click OK to start the upgrade procedures.



9. Firmware upgrade completed.



10. Press any key on PT-10 and press “Power” key to re-start PT-10.

7.5 How to check cradle (CRD-10) firmware version?

Please set the connection port first.

“Setup” → “Select Connect Port” → “USB” or “Serial port”

Then when you click

“Help” → “Cradle Version”, you will get the cradle firmware version information on the dialog box.

Note: PDT must be put into cradle (CRD-10)

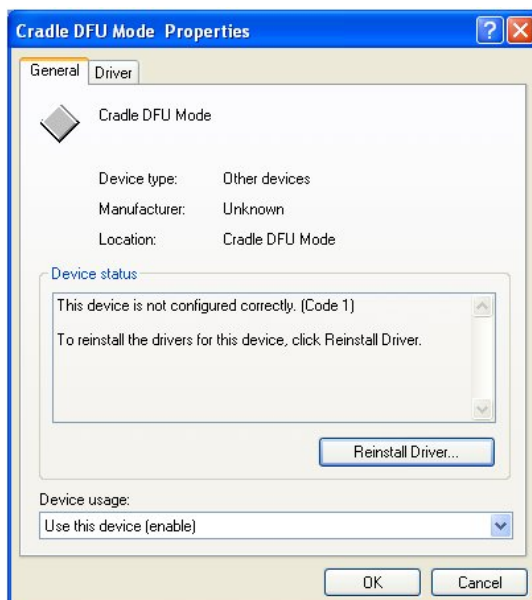
7.6. How to upgrade cradle (CRD-10) firmware?

Note: Please make sure that the USB cable and power adapter are well installed

1. Go to Device Manager in Computer Management (local) and see the property of Cradle DFU Mode?



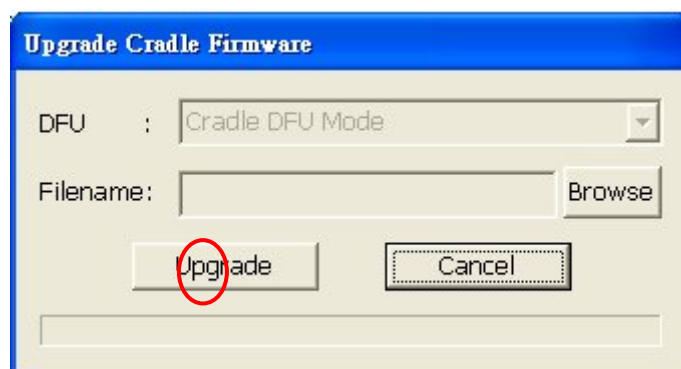
2. Click Reinstall Driver with the driver provided by ArgoLink.



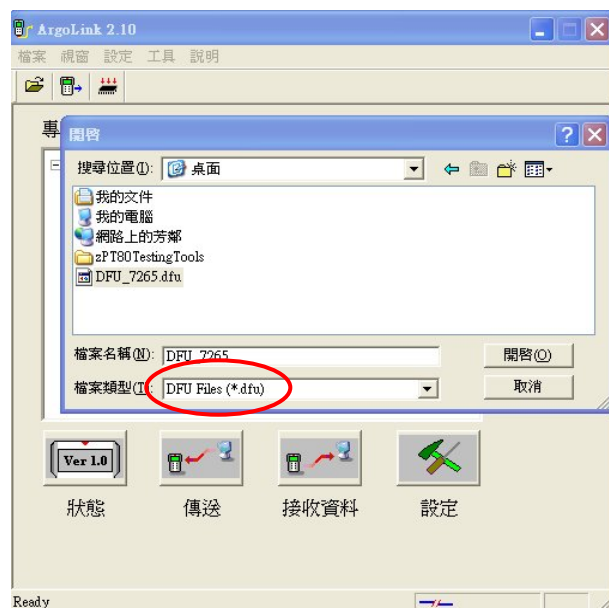
3. Remove the plastic cover first, and switch no. 1 to "ON". (Please see below picture for reference)



4. To execute ArgoLink
"Tool" → "Cradle F/W upgrade"



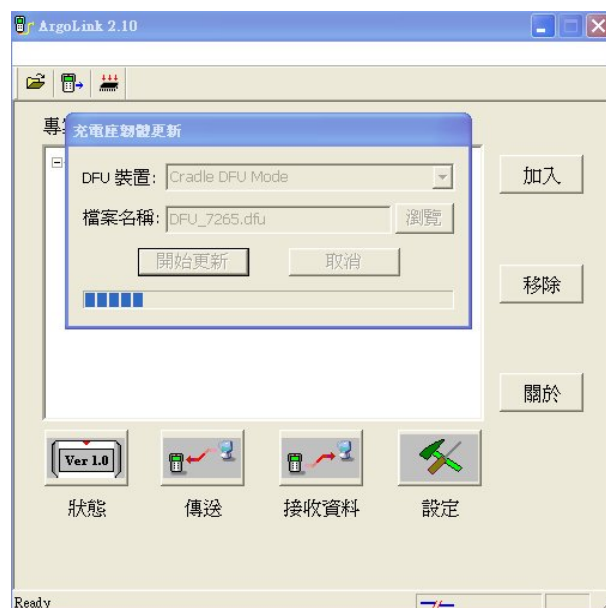
5. Go to Device Manager in Computer Management (local) and see the property of “Cradle DFU Mode”.



6 Press “start to upgrade”



6 Precede firmware upgrade



7 After completing the download job, turn off the power and adjust the dipswitch no. 1 back to "OFF" position.

